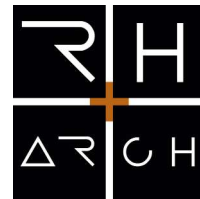


# RICH HOSTELLEY ARCHITECTURE



STUDIO PROFILE

Virginia | California | Maryland | Minnesota | N. Carolina | District of Columbia

P 202.730.5222

[www.archrh.com](http://www.archrh.com)



About **RH + ARCH**

---

Table of Contents

---

Vision + Mission  
Innovation  
Categories  
Services

---

Firm Profiles

---

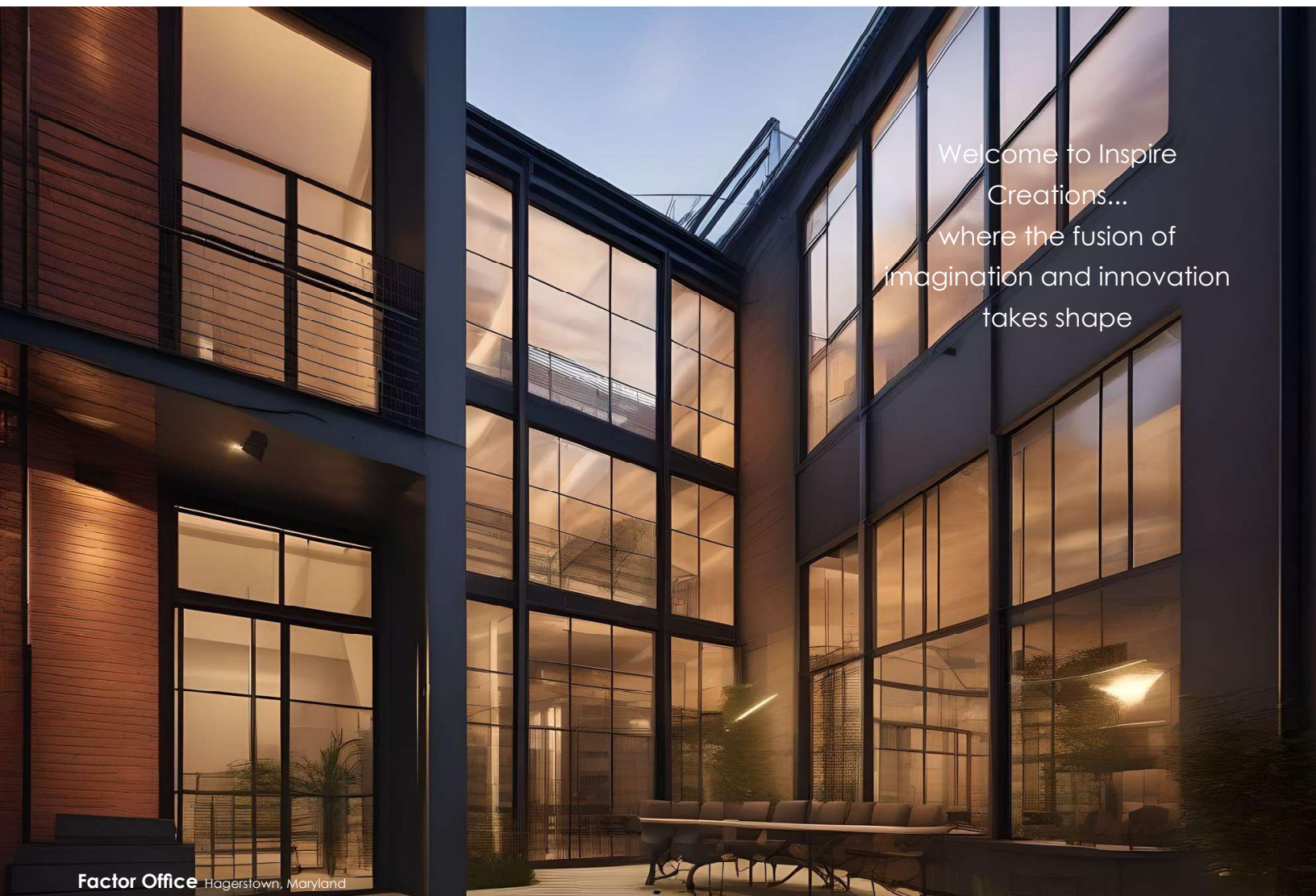
Project Samples

---

Contact

2024

# About RH+ARCH



## Welcome to RH + ARCH

An industry-leading architectural firm dedicated to providing comprehensive project delivery solutions. With a commitment to excellence, we offer unparalleled expertise across all phases of a project, ensuring a seamless and successful outcome.

Our firm takes pride in serving a diverse clientele, ranging from non-profits and corporations to manufacturers, distributors, local and federal government, and developers. By catering to such a wide spectrum of clients, we have developed a nuanced understanding of various industries and their unique requirements.

Our comprehensive services cover the entire project lifecycle. From the initial schematic layout analysis to the meticulous construction documentation, we are with you every step of the way. Our team is dedicated to providing thorough support across all project stages, ensuring that your vision is translated into reality with precision and efficiency.

# Table of Contents



- 01 Cover
- 02 Welcome
- 03 Table of Content
- 04 Vision & Mission
- 05 Innovation
- 06 Categories
- 07 Services
- 08 Profiles
- 09 Rich Hostalley
- 10 Christopher Villegas  
Tristan Hamrick
- 11 Roy Sebring  
Douise Dolan
- 12 Nancy Walker  
Richard Polo
- 13 Michelle Thomas  
Greg Neiss
- 14 Project Samples
- 15 Mount Shasta **Church**  
Mammoth Lakes **Chapel**  
Pod Two **Studio**  
Rats Motor **Garage**  
The Tobacco Warehouse Brews & **Beats**
- 16 Palm Springs **Taphouse**  
Newport Beach Classic Car **Showroom**  
Hilltop **Studio**  
Brewmasters **Studios**  
Northwest Car **Sales**
- 17 Blazer Heating and **Cooling**  
Madison **School**  
Brambleton Community **Association**  
Jimmy's Old Own **Tavern**  
Union Jack's British **Pub**
- 18 Residence **Inn**  
Fairfield **Inn**  
Northern Virginia Bioscience **Center**  
Brambleton **Barn**  
Hopehill **Church**
- 19 Contact

# Vision + Mission

"Vision is the art of seeing  
what is invisible to others"

Jonathan Swift



Blazer Heating and Cooling Design Concept | Richmond, Virginia

## Mission

Our commitment to honoring client project needs, goals, budgets and timelines is evident in our approach, achieved through a deep understanding of evolving trends, legislative nuances, and jurisdictional building and zoning code compliance placed on projects.

We prioritize open communication, valuing the input and aspirations of our clients at every stage. This collaborative approach not only fosters a sense of partnership but also allows us to tailor our designs to the unique needs and preferences of each client.

## Vision

As a cohesive and diverse community of architects, designers, strategists, tech enthusiasts, and visionary thinkers, we aspire to be a beacon of innovation and creativity, inspiring each member of our collective to contribute their most groundbreaking ideas.

United by shared values and a steadfast commitment to cultivating an inclusive culture, we empower one another to unleash our full potential and contribute our most innovative and creative work.

# Innovation



Our exceptional blend of design prowess and technical expertise has evolved through years of crafting diverse building types and projects, earning accolades for creativity, efficiency, and forward-thinking vision.

Mount Shasta Temple Design Concept | Mt. Shasta, California

## Intelligence-Based Approach

By leveraging the latest Building Information Modeling (BIM) collaboration software, we have revolutionized our workflow, fostering seamless collaboration with consultants, general contractors, and vendors ensuring that all perspectives are considered and integrated. This collaborative environment fosters efficient communication and coordination, mitigating potential issues before they arise during the construction phase.

By incorporating BIM collaboration and Artificial Intelligence (AI) software, we have the ability to create life-like three-dimensional models, which help visualize the project in a 3D environment. This facilitates better decision-making and allows for adjustments based on feedback from various stakeholders. This iterative process, elevates our ability to articulate and share the vision for the project, creating a more engaging and collaborative experience for all involved parties.

# Categories

## Partner

RH + ARCH stands as a trusted partner, extending our services to clients across the United States in both the public and private sectors. Our expertise spans a diverse range of industries, encompassing education, infrastructure, healthcare, retail, automotive, hospitality, and beyond – ensuring that every aspect of your project is comprehensively addressed.

From inception to completion, we are dedicated to seeing projects through every stage.

*"The mother art is architecture. Without an architecture of our own, we have no soul of our own civilization."* **Frank Lloyd Wright**



**The Ranch Brewing** Design Concept | Palm Springs, California

## Private

- Apartment and Condominium
- Luxury Estates
- Corporate Headquarters
- Retail Spaces and Centers
- Restaurant and Cafe
- Banks and Financial Institutions
- Hotels and Resorts
- Entertainment Venues
- Theaters and Cinemas
- Industrial and Manufacturing
- Flex Office and Warehouses

## Private

- Clinics and Healthcare Offices
- Assisted Living Facilities
- Private Education Buildings
- Mixed Use Developments
- Live-Work Spaces
- Boutique High-End Fashion Stores
- Gyms and Fitness Centers
- Private Sports Clubs
- Private Retreats
- Breweries and Distilleries
- Automotive Dealerships

## Public

- Education
- Federal Government Facilities
- Local Government Buildings
- Museum and Cultural Institutions
- Public Buildings
- Transportation Hubs
- Civic Centers
- Public Safety Buildings
- Research Facilities

# Services

## Predesign

Feasibility Studies  
Site Analysis  
Code Research  
Programming

## Conceptual Design

Architectural Site Plan  
Floor Plan Layout  
Tenant Improvement Plan  
Interior Design  
Elevational Studies  
Three-Dimensional Rendering

## Design Development

Conceptual design phase refinement to prepare more comprehensive drawings.

## Construction Docs

Provide detailed drawings and specifications for construction.

## Bidding & Negotiation

Assisting in the general contractor selection process.

## Construction Admin

Overseeing the construction ensure compliance with design intent and quality standards.

## Additional

Construction Management  
Post-Occupancy Evaluation  
Budgeting  
Value Engineering  
Architectural Consulting Services

Small, consistent acts of service can collectively make a significant impact on individuals and communities.



# Firm Profiles



Innovation in Design,  
Excellence in Execution  
Shaping Environments  
Beyond Expectations



# Rich Hostelley

Certified NCARB Licensed Architect  
Veteran of the United States Navy



Rich, a distinguished NCARB Certified Licensed Architect, brings over 25 years of invaluable expertise to the dynamic realm of commercial and residential design and construction. His extensive experience has solidified him as a visionary architect known for translating client aspirations into not only functional but truly breathtaking design solutions.

Throughout his career, Rich has cultivated a reputation for excellence, consistently exceeding expectations and showcasing an unparalleled commitment to delivering exceptional results. His ability to transform abstract ideas into tangible, aesthetically pleasing structures is a testament to his unique blend of creativity and precision.

## Education

2000 / 1996

Bachelor of Architecture / Bachelor of Science in Architecture  
The Catholic University of America | Washington, DC

## Licensure

NCARB Certification	66194
California	C 40323
Maryland	17148
Minnesota	62515
North Carolina	15156
Virginia	13719
Washington, DC	ARC 102120

## Seeking Reciprocity

Delaware / Pennsylvania / Texas

## Seeking International Reciprocity

United Kingdom / Mexico / Australia

## Experience

**RH + ARCH** | Irvine, California & Stanley, Virginia  
Principal Architect | Architect of Record | Production

**JA Burton Architecture, Inc.** | Vienna, Virginia  
Design Architect | Production

**Loveless Porter Architects, LLC** | Manassas, Virginia  
Consultant | Architect of Record | Senior Design Architect

**WD Partners** | Irvine, California  
Senior Project Manager | Design Architect | Production

**Mulvanny MG2** | Irvine, California  
Senior Project Manager | Design Architect | Production

# Christopher Villegas

Director of Operations | Project **Acquisition**



Christopher is a seasoned professional celebrated for his exceptional prowess in relationship-building, with a career marked by collaborative leadership and the cultivation of robust connections. Christopher stands out as a driving force behind project triumphs and organizational growth.

## Education

2003

Liberal of Arts

Leeward College, Pearl City, Hawaii

## Experience

**RH + ARCH** | Minneapolis / St. Paul, Minnesota

Director of Operations

**Heart of America Foundation** | Washington, DC

Innovation Lead

**TARGET Corporation** | Minneapolis / St. Paul, Minnesota

Project Manager | Senior Engineer

**The APT Mpls** | Minneapolis / St. Paul, Minnesota

CEO

# Tristan Hamrick

Project Manager | Intern **Architect**



Tristan's ability to navigate diverse project types showcases not only his technical skill set but also his intuitive grasp of the unique nuances inherent in each architectural endeavor.

In the fall of 2023, Tristan embarked on an enriching academic journey by pursuing a Masters of Architecture at Virginia Tech, slated to conclude in 2025, and underscores his commitment to continuous growth and expertise enhancement within the field.

## Education

2020

Bachelor of Science in Architecture

The University of Virginia, Charlottesville, Virginia

## Experience

**RH + ARCH** | Stanley, Virginia

Intern Architect | Production

**Loveless Porter Architects, LLC** | Manassas, Virginia

Intern Architect | Production

# Roy Sebring

Principal / Electrical **Engineer** | McKinney & Company  
**Veteran** of the United States Air Force



Roy has over 30 years of experience in the design of electrical systems and serves as Principal for McKinney & Company.

As a lead electrical engineer, Roy has extensive design experience with mission critical facilities, as well as in educational, medical, corporate and industrial sectors.

His electrical study analysis encompasses over-current protection coordination, fault analysis, and expansion feasibility.

Roy has developed and implemented verification test procedures for integrated systems, testing of switchgear, generator control systems and UPS systems as part of a complete electrical commissioning process for mission-critical applications.

## Professional Registrations

Professional Engineer (PE)  
Maryland, North Carolina, Pennsylvania, Texas, and Virginia

## Education

B.S. Electrical Engineering, Old Dominion University  
M.B.A, The College of William & Mary

# Douise Dolan

Senior Electrical **Designer** | McKinney & Company



Douise has over 37 years experience in the electrical design field.

She has extensive expertise in a variety of electrical design projects, including commercial, military, institutional, residential, industrial, and government, federal and private sector work.

Her broad capabilities allow her to adjust to many situations and extend her vast project and problem analysis in order to find efficient and realistic solutions.

# Nancy Walker

Principal & CEO / Structural **Engineer** | McKinney & Company



Nancy offers more than 40 years of experience in the structural design of buildings for commercial, office, and industrial clients. She has provided structural solutions for multistory office buildings, industrial buildings, and adaptive reuse.

A member of American Concrete Institute (ACI) committees 360 – Guide to Design of Slabs-on-Ground and 302 – Guide to Concrete Floor and Slab Construction, Nancy is an industrial floor slab consultant for new construction and for floor slab repairs.

### Professional Registrations

Professional Engineer (PE)

Maryland, North Carolina, Tennessee, Virginia, and West Virginia,

### Education

B.S. Civil Engineering

Virginia Polytechnic Institute and State University

# Richard Polo

Principal / Mechanical **Engineer** | Inversity Consulting Engineers

**Veteran** of The United States Marine Corps



Richard has 16 years in the mechanical engineering and design industry and another 10 years of experience serving our nation as United States Marine working with mechanical systems on military aircrafts.

His diverse background includes expertise in client/contractor relations, all aspects of Mechanical and Plumbing (MEP) planning, coordination, budgeting, design, and construction management, Energy Modeling and Management, HVAC system selection and cost analysis.

Richard prides himself on responsiveness and attentiveness to our clients' needs from start to finish of every project.

### Professional Registrations

Professional Engineer (PE)

Maryland, North Carolina, Pennsylvania, and Virginia

### EDUCATION

B.S. Mechanical Engineering, University of Virginia

# Michelle Thomas

Principal & CEO / Interior Designer | M Design Studio



Michelle is a visionary designer whose creative energy has fueled the establishment of a boutique studio that breathes life into spaces. With a fervent dedication to innovation, Michelle has carved her niche in the design world, seamlessly blending aesthetic finesse with functional brilliance.

Michelle's path has been illuminated by collaborations with esteemed names in the hospitality industry, as well as diverse projects types including Higher Education, Government and Corporate.

## Professional Registrations

Accredited Interior Designer | Licensed Interior Designer  
Maryland, Virginia, and Washington DC

## Education

Bachelor of Fine Arts  
Virginia Commonwealth University

# Greg Neiss

Principal / Construction Management | Apple 1 Enterprises, Inc.  
Veteran of The United States Marine Corps



Throughout his career, Greg has successfully managed a myriad of construction projects, each presenting its unique set of challenges and opportunities.

From the intricate demands of restaurant construction to the expansive scope of federal and local government projects, Greg's expertise knows no bounds.

His ability to navigate the complexities of construction with finesse and precision has earned him a reputation as a trusted leader in the industry.

## Professional Registrations

Licensed General Contractor  
Maryland, Virginia, and Washington DC

## EDUCATION

Business Administration, University of New York

# Project Samples



In every building, there is a story waiting to be told — a narrative of dreams, aspirations, and the craftsmanship that brings ideas to life.



### Mount Shasta Church Mt. Shasta, California

**RH + ARCH**

Architect of Record | Design Architect | Production

The design draws inspiration from the iconic mid-century architectural style, embracing the simplicity and elegance with an 'A-Frame' structure constructed from laminated timber members. The design not only pays homage to the architectural history of Northern California but also provides a contemporary touch, seamlessly integrating the new with the old.



### Mammoth Lakes Chapel Mammoth, California

**RH + ARCH**

Architect of Record | Design Architect | Production

Nestled at the base of the scenic Mammoth Lakes, our latest architectural venture unveils a contemporary chapel, a haven for spiritual reflection and community gathering. Modest in size at 9,000 square feet, The chapel is a testament to minimalist design principles, harmoniously engaging with nature to create a warm and welcoming atmosphere for all.



### Pod Two Studio Palm Desert, California

**RH + ARCH**

Architect of Record | Design Architect | Production

The desert escape container home and studio project is an exploration of unconventional architecture, sustainability, and the seamless integration of living and working spaces. Utilizing repurposed shipping containers not only minimizes environmental impact but also presents a creative and innovative approach to designing a retreat that harmonizes with the desert environment.



### Rats Motor Garage Ashburn, Virginia

**RH + ARCH**

Architect of Record | Design Architect | Production

This innovative project envisions the conversion of flex space warehouse office unit into a dynamic motorcycle repair and build shop, complemented by a curated selection of clothing apparel. Adding to the vibrancy, a cafe and bar/restaurant will not only cater to the community but also create a unique destination for motorcycle enthusiasts and the broader public alike.



### The Tobacco Warehouse Brews & Beats Richmond, Virginia

**RH + ARCH**

Architect of Record | Design Architect | Production | Construction Administration

The project is a testament to the adaptive reuse of architectural gems, breathing new life into an industrial relic and repurposing it for the enjoyment of the community. The building, steeped in the legacy of Richmond's tobacco industry, will be reimagined as a dynamic space that seamlessly integrates the craft of brewing, the vibrancy of live music, and the historic charm of its surroundings.



### Palm Springs Taphouse Palm Springs, California

**RH + ARCH**

Architect of Record | Design Architect | Production

This project envisions the transformation of a 1940s gas station into a charismatic taphouse gastropub, seamlessly blending the nostalgia of the past with the contemporary vibrancy of the present. This historic gas station, with its timeless architectural charm, will become the spirited backdrop for a gastronomic and social destination that celebrates the art of craft beer and culinary innovation.



### Newport Beach Classic Car Showroom Newport Beach, California

**RH + ARCH**

Architect of Record | Design Architect

The exterior of the former big-box store will be revamped to evoke the aesthetic of a classic car dealership. Vintage-inspired façade elements, will invite passersby to explore the curated collection within. The expansive parking lot will be transformed into a showcase area for featured classic cars, creating an exhibit that captivates the attention of both casual observers and devoted collectors.



### Hilltop Studio Big Bear, California

**RH + ARCH**

Architect of Record | Design Architect | Production

Hilltop draws inspiration from the iconic mid-century architectural style, with expansive windows, and integration with the surrounding environment. The design encapsulates the spirit of simplicity and functionality while embracing the use of industrial materials such as steel, concrete, and timber to craft a home that stands as both an architectural statement and a comfortable retreat.



### Brewmasters Studios Asheville, North Carolina

**RH + ARCH**

Architect of Record | Design Architect

Brewmasters embraces the past, present, and future. Through the adaptive reuse of an abandoned lumber mill, this project seeks to create a space where the spirit of the mountains converges with the creativity of craft brewing and the resonance of live music, inviting patrons to embark on a sensory journey amidst the mountainous landscapes.



### Northwest Car Sales Minneapolis / St. Paul, Minnesota

**RH + ARCH**

Architect of Record | Design Architect | Production

A once-unassuming warehouse will be updated and modernized, breathing new life into its exterior and vast interiors by transforming it into a modern car showroom inspired by the clean lines and timeless elegance of the mid-century design movement.





### Blazer Heating and Cooling Richmond, Virginia

**RH + ARCH**

Architect of Record | Design Architect | Production | Construction Administration

The new ground-up structure, spanning an impressive 6,300 SF, proudly stands as a two-story embodiment of contemporary design. This innovative office and warehouse space redefines the conventional notions of functionality and aesthetics through a seamless fusion of construction techniques, showcasing a harmonious blend of form and function.



### Madison School Alexandria, Virginia

**RH + ARCH** | M Design Studio

Architect of Record | Design Architect

This project unfolds a meticulous conversion, alterations, and additions to an iconic 1940's Art Deco office building located in the historic Del Ray District. The original two-story 2,500 SF office structure and two-story 7,500 SF addition, undergoes a visionary revision, emerging as a modern Pre-Kindergarten to Preschool facility that blends historical charm with contemporary functionality.

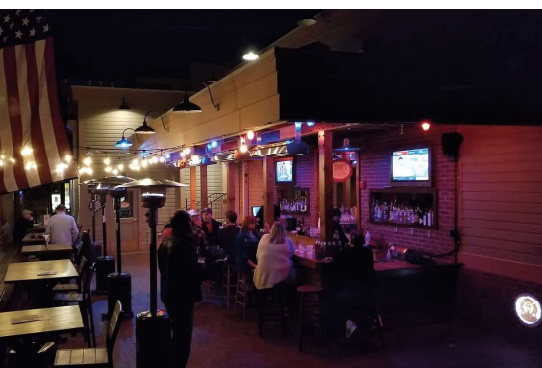


### Brambleton Community Association Brambleton, Virginia

**RH + ARCH**

Architect of Record | Design Architect | Production | Construction Administration

The new project is a venture featuring three buildings, encompassing an expansive 6,000 SF main office and maintenance building with functionality and aesthetics in mind, and a 3,000 SF enclosed covered garage, featuring five bays. Exterior cladding harmoniously matches that of the Main Office Building Maintenance section, contributing to a cohesive and unified aesthetic throughout the facility.

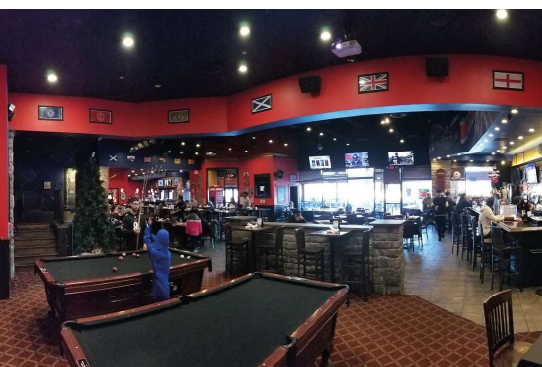


### Jimmy's Old Town Herndon, Virginia

**RH + ARCH**

Architect of Record | Design Architect | Production | Construction Administration

The historic 1917 two-story building underwent significant alterations, addressing both functionality and accessibility. Increased SF from 5,500 to 18,000 SF with two new additions for dining, new kitchen, restrooms, and the introduction of the "Beer Garten," featuring a full-service bar, ample seating, and a dedicated performance stage.



### Union Jack's British Pub Rockville, Maryland

**RH + ARCH**

Architect of Record | Design Architect | Production | Construction Administration

The interior design was meticulously crafted of the three original restaurants into a unified and inviting space. The incorporation of a proposed mezzanine, to be added later, will add an extra layer of versatility to the expansive interior. A total interior SF of 25,000 and an 2,400 SF of exterior space overlooking a boardwalk and lake, aimed to provide a memorable experience for its patrons.



### Residence Inn Bethesda, Maryland

**RH + ARCH** | M Design Studio

Architect of Record | Design Architect | Production | Construction Administration

In collaboration with M Design Studio, RH+ARCH undertook a transformative interior project for the Residence Inn located in Bethesda, Maryland. Focused on modernizing the 1990s interior spaces, our team provided comprehensive design and construction documents, breathing new life into various public areas and guest lodging.



### Fairfield Inn Washington, DC

**RH + ARCH** | M Design Studio

Architect of Record | Design Architect

In a collaborative effort with MD Studio, RH+ARCH embarked on a transformative interior architecture project for the Fairfield Inn Washington, DC. The scope of the project involved comprehensive interior alterations to public and guest room spaces, design enhancements, and detailed construction documents, aiming to elevate the guest experience and modernize the hotel's aesthetic.



### Northern Virginia Bioscience Center Manassas, Virginia

**RH + ARCH** | Loveless Porter Architects

Architect of Record | Design Architect | Production | Construction Administration

Loveless Porter Architects engaged Rich Hostelley Architect as a design consultant for the comprehensive development of the new NOVA Bioscience Center. The 30,000-square-foot facility is meticulously designed to provide a high-quality experience for companies engaged in cutting-edge research. The center's focus on Biosafety Level 2 (BSL-2) laboratories.



### The Barn at Brambleton Brambleton, Virginia

**RH + ARCH** | Loveless Porter Architects

Architect of Record | Design Architect | Production | Construction Administration

Loveless Porter Architects enlisted Rich Hostelley Architect as a design consultant, entrusting him with a range of services crucial to the successful realization of the project's objectives, ensuring a seamless transformation of an existing dairy barn into a unique special events center that could accommodate a diverse range of gatherings.



### Hope Hill Church Manassas, Virginia

**RH + ARCH** | Loveless Porter Architects

Design Architect

Loveless Porter Architects engaged Rich Hostelley Architect as a design consultant for the envisioning of the Hopehill Church New Sanctuary, Fellowship, and Educational Center. While a programmed floor plan solution had been developed, the project required a cohesive and dynamic exterior design, prompting the inclusion of Rich Hostelley to bring a balanced vision to the forms and materials.



**RH + ARCH**

Visit our Website: [www.archrh.com](http://www.archrh.com)

Email Us: [rich@hostelleyarchitect.com](mailto:rich@hostelleyarchitect.com)

Phone: 202.730.5222

Office Locations: Stanley, Virginia  
Irvine, California  
Minneapolis, Minnesota

Licensed: California  
Maryland  
Minnesota  
North Carolina  
Virginia  
Washington, DC

Seeking Reciprocity: Delaware  
Pennsylvania  
Texas

Seeking International Reciprocity: Mexico  
The United Kingdom  
Australia

2024

